



Western United States Representative Contact: Hue Byles 909 486 0997

ThermaSteel Composite, Steel, Structural Insulated Panels

The REVPANEL System

The REVPANEL SystemTM by THERMASTEEL

ThermaSteel set out to REVAMP and REVOLUTIONIZE how walls are made. The result is the REVPANEL System, an integrated structural panelized building system, comprised of exterior, interior, roof, and floor panels. Although these can be used separately, along with other types of construction, the system is maximized when it is used together. **The REVPANEL System** is made up of Composite Structural Insulated Panels which are exceptionally strong, light, and energy efficient. In addition, **REVPANELS** are engineered to install simply and quickly, providing structure, vapor barrier, insulation and sheathing all in one efficient labor-saving step. Imagine cutting wall construction time in half, cutting labor cost by 50%, and achieving energy savings of 75%. That is **REVPANEL** by ThermaSteel.

[System Properties](#) | [System Benefits](#)



xPANEL™
Exterior Wall



Exterior Composite Structural Insulated Panels

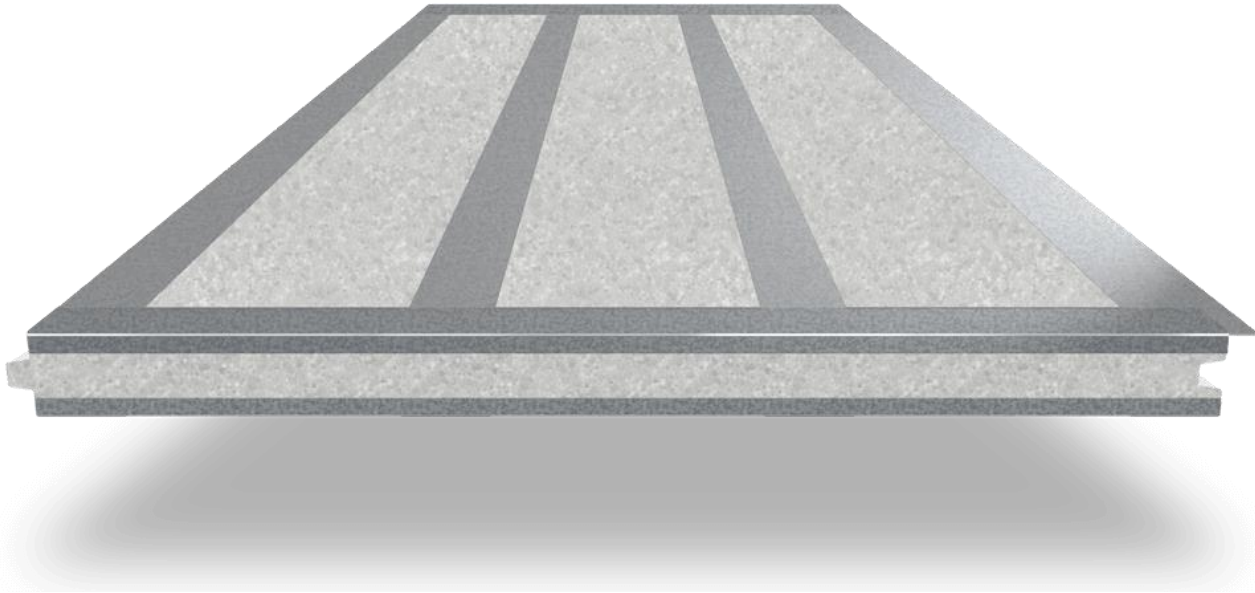
xPANEL is the exterior wall component of **ThermaSteel's REVPANEL System**, an integrated system of composite structural insulated panels (c-sip) with amazing properties, which when used together provide strength, and thermal efficiency unavailable with any other system.

Standard **xPanel** dimensions are 48" w x 96" thru 144" long. Single and compound angles are available as needed. Contact ThermaSteel for more information.

- 5.5"-7.5" Thickness
- 5.5" = R-35, 7.5" = R-47 (Effective)
- 4 in 1, Structure, Insulation, Sheathing, Vapor Barrier
- Load bearing up to 24,000plf (12GA)
- Up to 8 stories with no additional structure
- Density 1-1.5pcf
- Pre-engineered per spec
- Arrives on site with doors and windows cut
- [System Properties](#) | [System Benefits](#)



iPANEL™
Interior Wall



Interior Composite Structural Insulated Panels

iPANEL is the interior wall component of **ThermaSteel's REVPANEL System**, an integrated system of composite structural insulated panels (c-sip) with amazing properties, which when used together provide strength, and thermal efficiency unavailable with any other system.

Standard **iPanel** dimensions are 48" w x 96" thru 144" long. Single and compound angles are available as needed.

- 3.5" Thickness
- R-22 (effective)
- Load Bearing 13,568plf (16Ga)
- Pre-engineered per spec
- Arrives on site with door openings cut
- Custom sizes available on request
- [System Properties](#) | [System Benefits](#)



rPANEL™
Roof Panel



Roof Composite Structural Insulated Panels

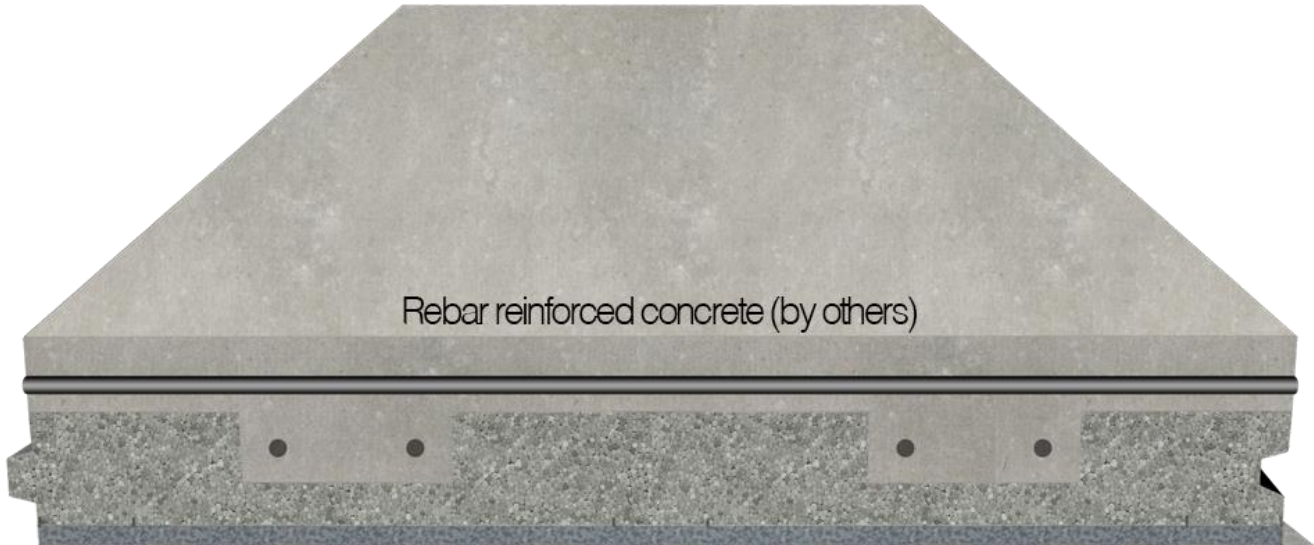
rPANEL is the roof component of **ThermaSteel's REVPANEL System**, an integrated system of composite structural insulated panels (c-sip) with amazing properties, which when used together provide strength, and thermal efficiency unavailable with any other system.

Standard **rPanel** dimensions are 48" w x 96" thru 144" long. Single and compound angles are available as needed. Spans longer than 144" can be achieved in several ways.

- 5.5" and 7.5" Thickness
- 5.5" = R-35, 7.5" = R-47 (Effective)
- Up to 220mph wind load
- Density 1-1.5pcf
- Pre-engineered per spec
- Arrives on site with door openings cut
- [System Properties](#) | [System Benefits](#)



fPANEL™
Floor Panel



Floor Composite Structural Insulated Panels

fPANEL is the floor component of **ThermaSteel's REVPANEL System**, an integrated system of composite structural insulated panels (c-sip) with amazing properties, which when used together provide strength, and thermal efficiency unavailable with any other system.

Standard **fPanels** dimensions are 48" w x 96" thru 144" long.

- 10.5" and 11.5" with concrete (by others)
- Free spans up to 30ft
- 50 p/sqf live load
- [System Properties](#) | [System Benefits](#)
-



Western United States Representative Contact: Hue Byles 909 496 0997